



CORPORATE CATALOGUE 2022

GRIDWALLS

www.gridwalls.ae

TABLE OF
CONTENTS

| | |
|--|----|
| About Gridwalls | 04 |
| Our Core Values | 09 |
| Our Production Capacity and Facilities | 08 |
| Our Products | 12 |
| Professional Services | 14 |
| Our Projects | 16 |
| Certificates | 36 |
| Licenses | 40 |
| Contact Information | 42 |

“Together,
we can
achieve
the vision”



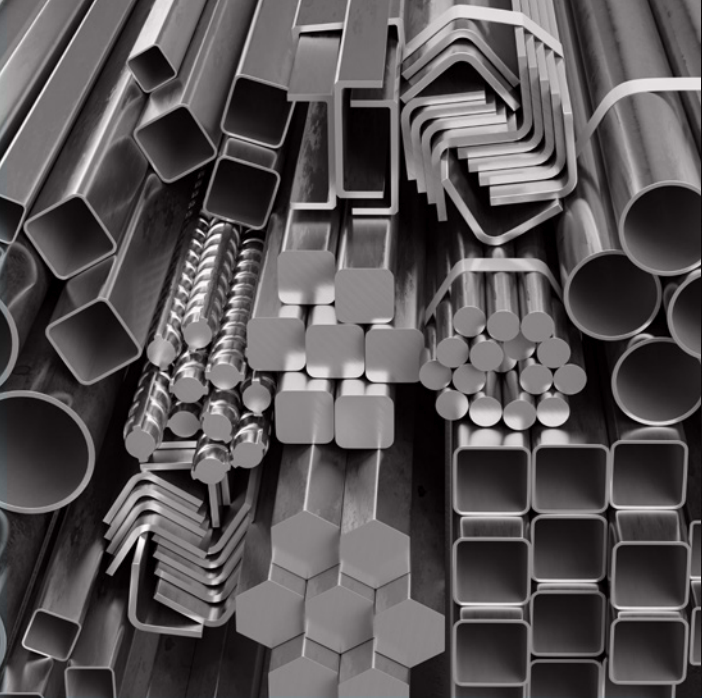
ABOUT GRIDWALLS

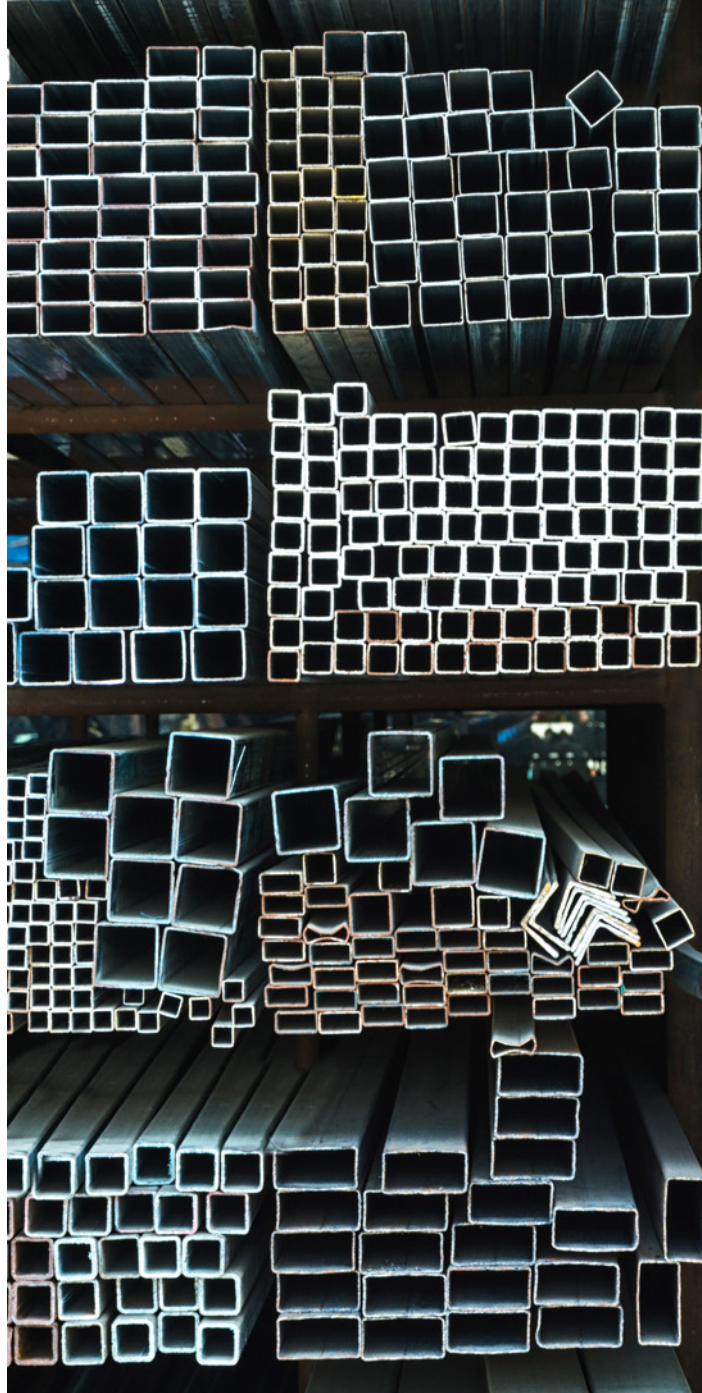
Gridwalls Architectural Metal Industries is established to respond to the growing demands of UAE and Gulf region for high-end aluminum contracting works and steel glazing products.

The large integrated manufacturing facility is strategically located in the heart of the Dubai Investment Park and occupies over 30 purpose-built sheds housed in a large complex of industrial buildings. Though the company was incorporated in its current avatar in August 2019, the complete property, including the buildings and the expansive range of machinery, was bought over in its entirety from a renowned player in the Middle east architectural facades industry, which was established over twenty years ago.

We are specialized in the field of design, manufacturing and installation of building envelops and modern architectural facades. Our activities are related to the major components in closing the outer skin of a building providing a functional and practical construction method all in preserving the initial architectural specifications of our Clients.







OUR CORE VALUES



INTEGRITY

We do things honestly. We reflect it to our daily work, our product quality, our transparency in .dealing with others



RESPECT

We treat everyone with value and sincerity in .every aspect of business



CONSTANT IMPROVEMENT

We always aim to improve our products, services .and our people



UNITY

We are strongest when we work together as a TEAM



QUALITY

We provide outstanding and deliver .premium value to our customers



PERSONAL ACCOUNTABILITY

We take responsibility to deliver our .commitments

OUR PRODUCTION FACILITIES

We established a system for in-house development and production, encompassing everything from materials to manufacturing equipment and products.

Our processes in place is to consistently offer high-quality products, including elemental technologies for the development of various materials such as aluminium, technologies suited to environment and manufacturing systems.



PRODUCTION CAPACITY

| MINIMUM MONTHLY CAPACITY - 1 SHIFT PRODUCTION | | | |
|---|------|-------|-------------------|
| Product | % | Area | Approximate Value |
| UCW | 40% | 8,500 | 7,225,000 aed |
| SCW | 35% | 7,500 | 6,375,000 aed |
| W&D | 10% | 2,000 | 1,700,000 aed |
| Cladding | 15% | 4,000 | 3,400,000 aed |
| Total | 100% | 8,500 | 18,700,000 aed |

| MINIMUM MONTHLY CAPACITY - 2 SHIFT PRODUCTION | | | |
|---|------|--------|-------------------|
| Product | % | Area | Approximate Value |
| UCW | 40% | 16,000 | 13,600,000 aed |
| SCW | 35% | 13,000 | 11,050,000 aed |
| W&D | 10% | 3,500 | 2,975,000 aed |
| Cladding | 15% | 7,000 | 6,375,000 aed |
| Total | 100% | 40,000 | 34,000,000 aed |

THE KEY COMPONENTS OF OUR PRODUCTION SYSTEM



MATERIALS

Aluminum & Glass Raw materials are produced locally & internationally by specialized extruders & manufacturers



COMPONENTS

All Production elements for glass & aluminum are manufactured by system suppliers based on the Projects Specification



MACHINERIES & EQUIPMENT

We develop our own manufacturing lines, equipment and process management systems and utilize them in our domestic plants



PROCESSING, ASSEMBLING & PACKAGING

Our products are in our carefully controlled plants, from preparing the components, quality checking, assembly until careful packaging of materials to delivery of the same to including the proper installation to project sites

OUR PRODUCTS

“We constantly strive to improve our capabilities in technological development, quality management and customer service to offer our products and services that earn the satisfaction and trust of our customers”



UNITISED FACADES

Unitized facades are made from modules, which are pre-assembled in the factory. They essentially consist of the frame, glazing, sealing system, and connecting elements. On the construction site, the individual facade elements only need to be correctly mounted and aligned



BALUSTRADES

Balustrade, low screen formed by railings of stone, wood, metal, glass, or other materials and designed to prevent falls from roofs, balconies, terraces, stairways, and other elevated architectural elements



STICK CURTAIN SYSTEMS

The Stick System is a curtain walling system consisting normally of extruded aluminum transoms and mullions known as “sticks” which are cut to length in the factory prior to assembly on site which may compromise of mechanically held fixed or open glazing (single pane or (double-glazed units



SPIDER GLASS AND FIN SYSTEM

The use of spiders with structural glass fins is a versatile system providing clean lines to a building facade. The glass fins are normally used as a vertical mullion but can be used as a horizontal transom or in overhead glazing applications



DOORS AND WINDOWS

Door/ window main frame is installed by fixing the top and bottom frame to the concrete using the appropriate fixing as per approved drawing. Alignment is checked and adjusted as per the requirement. Shimming will be provided where required, to meet the correct position. Aluminum and concrete material separator shall be provided .as required in the specification



DOMES AND SKYLIGHTS

Skylight is a structure that allows light on the roof to travel to the interior of a building. There are three main components of a skylight the top structure, the ceiling frame and ceiling panel, and the duct which connects the top structure to the ceiling frame. Depending on the project requirement skylights framing components are generally Aluminium and other lightweight metals



LOUVERS AND SUNSHADES

An aluminum louver is a protective window covering which allows air and light passage and keeps away rain and sunshine. Aluminum louvers control airflow in an enclosed area or a processed system. Louver belongs to the category damper and consists of parallel blades inside a duct

“We comply with all relevant requirements to ensure our products and services quality.

We carefully set products / services objectives and review results and allocate operational resources for that purpose as needed.”

OUR PROFESSIONAL SERVICES



CONSULTANCY/ DESIGN ENGINEERING

During the initial stage of the project, we offer technical assistance to our clients from architectural concept, preparation of façade performance specifications and design development

Our experts establish the best building options available for your project and develop façade design solutions which will provide optimal performance and constructability while maintaining your budget constraints and architectural preference



PRODUCTION

We have our own dedicated façade production facility housing state-of-the-art machinery and equipment

Additionally, our facility in Dubai, United Arab Emirates stands on a sqm of plot, housing the most advanced machineries and has 27,700 sqm. The main 8,500 a monthly production capacity of approximate office facility could aid in the fabrication of our local, regional and worldwide projects



PROJECT MANAGEMENT

We have a dedicated full time project teams in all our projects. These teams are locally based and full time in their assigned project sites, therefore ensuring direct control over the day-to-day activities such as installation and inspections



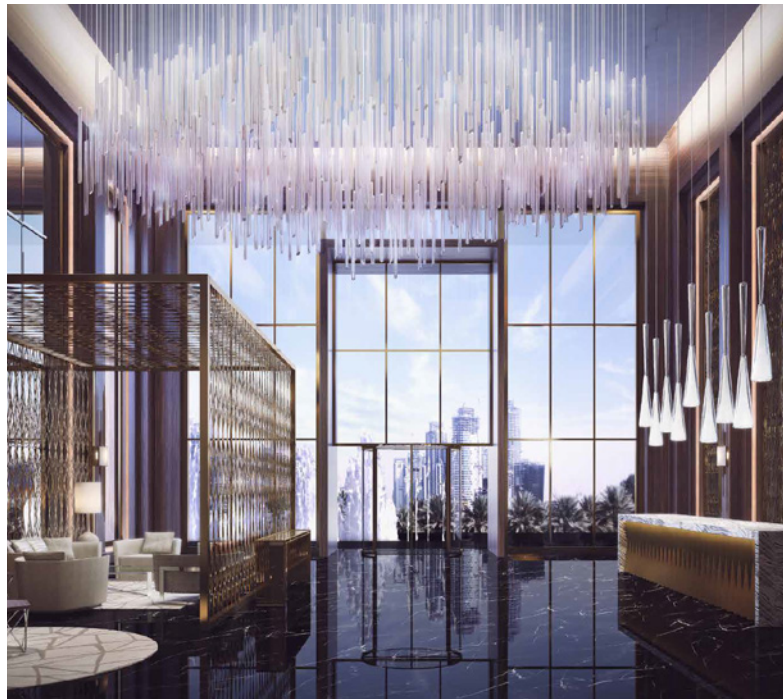
INSTALLATION

Our project management team carry out careful planning and management of the installation phase to successfully handover the project with high quality, safely and on time

A wide-angle, high-angle aerial photograph of the London skyline. The River Thames flows through the center-right of the image. On the left, several tall skyscrapers are visible, including the Gherkin and the Shard. In the center, the Lloyd's building stands out with its unique, curved facade. The right side of the image is dominated by the tall, slender Shard skyscraper. The foreground shows a dense urban landscape with various buildings, including a large, modern building with a curved roof in the bottom right. The sky is filled with soft, white clouds.

OUR PROJECTS

“Our projects are designed, manufactured, installed and supervised by our professionals and ensures that only the best quality complying with applicable standards and regulations are delivered”



AYKON CITY TOWER B BY DAMAC @ SHEIKH ZAYED RD

Consultant : Lacasa

Main Contractor : China State Construction Engineering Corporation Middle East (CSCEC ME)

Scope of Works : Aluminum and Glazing works (Stick curtain wall, doors, window, louvers, cladding and Glass balustrade)

Total SQM: 35,115



MADINAT JUMEIRAH LIVING-SALES CLUSTER-PHASE 3A

Client : Majinat Jumeirah Living

Consultant : Next Engineering Consultants

Main Contractor : Al Sahel Contracting Company LLC

Scope of Works : Doors, Windows and Horizontal Louvers

Size by SQM : 5,548



BIOLOGICAL VACCINE PRODUCTION BASE @ KIZAD ABU DHABI

Client : G42 Pharmaceutical Manufacturing

Consultant : ECG Engineering Consultant Group

Main Contractor : China State Construction Engineering Corp. Ltd. (CSCEC)

Scope of Works : Aluminium and Glazing Works



BLOCK L AREEJ 1-7 AT ALJADA

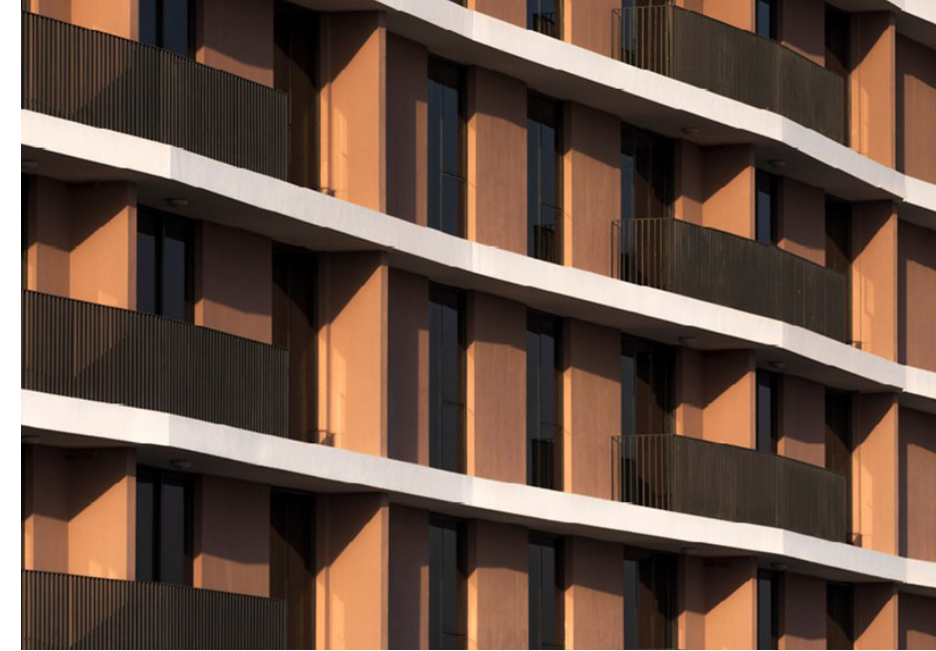
Client : Arada Development

Consultant : Arif & Bint oak

Main Contractor : MBCC, Intermass, Klamfer

Scope of Works : Vertical Louver & Roof Shade

Size by SQM : 14,025



BLOCK L REHAN 1-3 AT ALJADA

Client : Arada Development

Consultant : Arif & Bint oak

Main Contractor : MBCC, Intermass, Klamfer

Scope of Works : Vertical Louver & Roof Shade

Size by SQM : 14,025





BLOCK L SARAB VILLAS AT ALJADA

Client : Arada Development

Consultant : Arif & Bint oak

Main Contractor : MBCC, Intermass, Klamfer

Scope of Works : Vertical Louver & Roof Shade

Size by SQM : 14,025



SUR LA MER PHASE 1

Client : North 25/ Meraas

Main Contractor : Beaver Gulf

Scope of Works : Fabrication works- Aluminum hinged/sliding doors, windows and louvers

Size by SQM : 2,263





G+1 PRIVATE VILLA @ AL BARRARI

Client : Nabila Benattia
 Consultant : Arch Alive
 Main Contractor : Four Links
 Scope of Works : Glass Balustrades



BURJ ROYALE, DOWNTOWN DUBAI

Client : Emaar
 Consultant : U+A
 Main Contractor : Al Futtaim
 Scope of Works : Glass Balustrades
 Size by SQM : 4,800



MISK APARTMENTS 1, 2, 3 & 4 ALJADA DEVT.

Client : Arada Developments

Consultant : Arif & Bintok

Main Contractor : Intermass

Scope of Works : Stick curtain walls, Windows & other conventional works

Size by SQM : 29,700



DEIRA WATERFRONT DEVELOPMENT- PHASE 1-PLOT 09

Client : Ithraa Dubai- Deira Waterfront Developments

Consultant : DAR

Main Contractor : China State

Scope of Works : Stick Curtain Walls, Doors, Windows, Cladding,
Aluminum Trellis, Louver & Aluminum Balustrades

Size by SQM : 13,000



JABAL OMAR

Client : Jabal Omar Development Company

Main Contractor : ACC

Scope of Works : Fabrication, Assembly and Glazing



AL FATTAN DOWNTOWN DEVELOPMENTS

Client : Al Fattan Properties

Main Contractor : Ali Mousa

Scope of Works : Fabrication, Assembly and Glazing

Size by SQM : 10,000



SUSTAINABILITY PAVILION FOR DUBAI EXPO 2020

Client : Emaar

Main Contractor : ASGC

Scope of Works : Fabrication works – UCW Panels Reflector Panel Type and E-Tree

DIA Frames for the Main Canopy

Size by SQM : 13,000

PROJECT LIST

| ON-GOING PROJECTS 2021-2022 | | | | | |
|--|---|----------------------------------|------------------------------------|--------------------------------------|---------|
| Project Name | Scope of Work | Client | Consultant | Main Contractor | Status |
| AJD Misk Apartments 1-2 | Supply & Installation of Stick Curtain Walls, Doors, Windows, Decorative Fins, Steel Shades, Louvers & Glazed Balustrades | Al Jada Developments LLC | Arif & Bint oak | IM | Ongoing |
| AJD Misk Apartments 3-4 | Supply & Installation of Stick Curtain Walls, Doors, Windows, Decorative Fins, Steel Shades, Louvers & Glazed Balustrades | Al Jada Developments LLC | Arif & Bint oak | IM | Ongoing |
| Al Barrari Villa | Supply & Installation of Stick, Doors, Windows & Fins | Nabila Benattia | ARCH ALIVE | FOUR LINKS | Ongoing |
| Block L- Areej 1-4 | Supply & Installation of Vertical Louver & Roof Shade | Al Jada Developments LLC | Arif & Bint oak | MBCC | Ongoing |
| Block L- Areej 5-7 | Supply & Installation of Vertical Louver & Roof Shade | Al Jada Developments LLC | Arif & Bint oak | MBCC | Ongoing |
| Block L- Rehan 1-3 | Supply & Installation of Vertical Louver & Roof Shade | Al Jada Developments LLC | Arif & Bint oak | IM | Ongoing |
| Block L- Sarab Villas | Supply & Installation of Vertical Louver & Roof Shade | Al Jada Developments LLC | Arif & Bint oak | KLAMPFER | Ongoing |
| Block L- Misk Car Park | Supply & Installation of Vertical Louver & Roof Shade | Al Jada Developments LLC | Arif & Bint oak | IM | Ongoing |
| Madinat Jumeirah Living-Sales Cluster-Phase 3A | Supply and Installation of Doors, Windows, Horizontal Louver | MJ (Madinat Jumerah Living) | Next Engineering Consultants | Al Sahel Contracting Company LLC | Ongoing |
| Biological Vaccine Production Base @ Kizad Abu Dhabi | Aluminum and Glazing works | G42 Pharmaceutical Manufacturing | EGC Engineering Con- sultant Group | China State Construction Engineering | Ongoing |

| ON-GOING PROJECTS 2021-2022 | | | | | |
|--|----------------------------|--------|------------|--------------------------------------|---------|
| Project Name | Scope of Work | Client | Consultant | Main Contractor | Status |
| Aykon City Tower B @ Sheikh Zayed Road | Aluminum and Glazing works | Damac | Lacasa | China State Construction Engineering | Ongoing |

| COMPLETED PROJECTS – SUPPLY AND INSTALLATION – 2020-2021 | | | | | |
|--|---|--|------------|-----------------|--------------------------|
| Project Name | Scope of Work | Client | Consultant | Main Contractor | Status |
| Deira Waterfront Phase 1, Plot 09 | Supply & Installation of Stick Curtain Walls, Doors, Windows, Cladding, Aluminum Trellis, Louver & Aluminum Balustrades | Ithra Dubai - Deira Waterfront Development LLC | DAR | CSCEC | Completed (Awaiting ToC) |
| Burj Royale on Plot 97 | Supply & Installation of Glass Balustrade | EMAAR | U+A | AFC | Completed (Awaiting ToC) |

CERTIFICATES & LICENSES

APPROVED

CERTIFICATES

CERTIFICATE OF REGISTRATION

GLOBALCERT



This is to certify that:

Gridwalls Architectural Metal Industries
PLOT 598 - 1176, Street 72, Dubai Investment Park
Dubai, United Arab Emirates

has been evaluated and certified under the GLOBALCERT® program as conforming to the following Management System standards:

ISO 9001:2015

The certificate is valid for the following scope:

Design, fabrication, supply and installation of building façade solutions

Certificate Number: 97195928

Current Certification Date: October 26, 2021

Certified Since: October 21, 2020

Surveillance Due/Expiry Date: October 21, 2022

Recertification Due: October 21, 2023




Bruce Weber
President
QMS Global Group

This approval is subject to the company maintaining its system to the required standard(s), which will be continuously monitored by the QMS Global Group headquartered at 129 NW 13th Street, Suite 22, Boca Raton, FL 33432, USA. Initial certification, surveillance and recertification audits may be performed by other QMS Global offices and are subject to the approval of the head office.

Accredited by: Accreditation Services for Certification Bodies Limited, 6 Ferns Place, Bournemouth, Dorset, BH8 8DAU, UK. This certificate is authorized for issue by ASCB in accordance to ISO 17021:2011 Conformity assessment – Requirements for bodies providing audit and certification of management systems.

GLOBALCERT® is a registered trademark of QMS Global.

CERTIFICATE OF REGISTRATION

GLOBALCERT



This is to certify that:

Gridwalls Architectural Metal Industries
PLOT 598 - 1176, Street 72, Dubai Investment Park
Dubai, United Arab Emirates

has been evaluated and certified under the GLOBALCERT® program as conforming to the following Management System standards:

ISO 45001:2018

The certificate is valid for the following scope:

Design, fabrication, supply and installation of building façade solutions

Certificate Number: 97195960

Surveillance Due/Expiry Date: October 11, 2022

Certified Since: October 11, 2021

Recertification Due: October 11, 2024




Bruce Weber
President
QMS Global Group

This approval is subject to the company maintaining its system to the required standard(s), which will be continuously monitored by the QMS Global Group headquartered at 129 NW 13th Street, Suite 22, Boca Raton, FL 33432, USA. Initial certification, surveillance and recertification audits may be performed by other QMS Global offices and are subject to the approval of the head office.

Accredited by: Accreditation Services for Certification Bodies Limited, 6 Ferns Place, Bournemouth, Dorset, BH8 8DAU, UK. This certificate is authorized for issue by ASCB in accordance to ISO 17021:2011 Conformity assessment – Requirements for bodies providing audit and certification of management systems.

GLOBALCERT® is a registered trademark of QMS Global.

CERTIFICATES



GOVERNMENT OF SHARJAH
Economic Development Department

حكومة الشارقة
دائرة التنمية الاقتصادية

شهادة سجل صناعية
Industrial Register
Certificate



تفاصيل الرخصة License Details

رقم التسجيل License No. 779180

رقم الرخصة Registration No. 193433

تاريخ الإصدار Expiry Date 2021/10/06

تاريخ الانتهاء Issue Date 2020/10/06

الاسم التجاري Trade Name GRIDWALLS ARCHITECTURAL METAL INDUSTRIES L.L.C - SHJ. BR

الاسم التجاري Trade Name GRIDWALLS ARCHITECTURAL METAL INDUSTRIES L.L.C - SHJ. BR

النشاط القانوني Legal status فرع لشركة محلية

أنشطة الرخصة

صناعة الأشغال البلاستيكية للأبنية وصناعة الأشغال المعدنية للمباني

العنوان الشارع رقم 11/ الشارع رقم 1 شارع الشيخ محمد بن زايد مشيرة رقم S08 ملك عوفان بسلم كرامه عوض التثري

تاريخ الطباعة 2020/10/06

رقم المستند 39795

- This document is official. It doesn't need to be stamped or signed.
To view license details please visit SEDD web site: www.sedd.ae

- Distribution of flyers is strictly prohibited in public and residential areas.
Distribution is allowed through:

- هذه الوثيقة رسمية ولا تحتاج لمعد أو توقيع.
لتفحص من صحة البيانات يرجى زيارة موقع SEDD: www.sedd.ae

- يمنع تعليق ملصقات توزيع الاعلانات في الأماكن العامة والأماكن السكنية. التوزيع المسموح فقط عن طريق المصنف، المحلات ومشتريات العميل.

LICENSES

اقتصادية دبي
DUBAI ECONOMY

رخصة صناعية
Industrial License

| تفاصيل الرخصة / License Details | | | |
|---------------------------------|--|--------------------|--|
| License No. | 848117 | رقم الرخصة | جردوئل للصناعات المعدنية المعمارية ش.ذ.م.م |
| Company Name | GRIDWALLS ARCHITECTURAL METAL INDUSTRIES L.L.C | اسم الشركة | جردوئل للصناعات المعدنية المعمارية ش.ذ.م.م |
| Trade Name | GRIDWALLS ARCHITECTURAL METAL INDUSTRIES L.L.C | الاسم التجاري | جردوئل للصناعات المعدنية المعمارية ش.ذ.م.م |
| Legal Type | Limited Liability Company(LLC) | نات سنوالية محدودة | |
| Expiry Date | 20/08/2021 | تاريخ الانتهاء | Issue Date 21/08/2019 |
| D&B D-U-N-S ® | 0 | رقم التخليص | Main License No. 848117 |
| Register No. | 1441667 | رقم السجل التجاري | DCCI No. 326325 |

| الأطراف / License Members | | | |
|---------------------------|--------------------------|-----------------------|----------------|
| رقم الشخص / No. | الاسم / Name | الجنسية / Nationality | الصفة / Role |
| 19234 | حكم علي صدر الدين ماساني | الهند / India | مدير / Manager |

| نشاط الرخصة التجارية / License Activities | |
|--|----------------------------------|
| Doors, Windows & Other Plastic Building Products Manufacturing | صناعة الأثاث البلاستيكية للأبنية |
| Building Metal Products Manufacturing | صناعة الأثاث المعدنية للمباني |

| العنوان / Address | |
|-------------------|------------|
| Phone No | تليفون |
| Fax No | فاكس |
| Mobile No | هاتف محمول |

| ملاحظات / Remarks | |
|--------------------------------|--------------------------------------|
| تم دفع رسم الحصص في 29/06/2020 | تم دفع رسم الراس المال في 17/06/2020 |

رقم الإيصال: 13582568 تاريخ الصياغة: 11/07/2020 15:20 Receipt No.

يمكنك الآن تجديد رخصتك التجارية من خلال إرسال رسالة القصيرة: أرسل رقم الرخصة في 6969 (دو/الصيالات) للحصول على أتم الفتح.

Now you can renew your trade license by sending a text message (SMS). Send your trade license number to 6969 (Du/ Etisalat) to receive payment voucher.

يمكنك الآن تجديد رخصتك وصداقة بدون توقيع من دائرة التنمية الاقتصادية. أرسل رسالة القصيرة البائقة الواردة في الرخصة بوجهاء زيارة الموقع www.dubaided.gov.ae

Approved electronic document issued without signature by the Department of Economic Development. To verify the license kindly visit www.dubaided.gov.ae

دائرة التنمية الاقتصادية
DEPARTMENT OF ECONOMIC DEVELOPMENT

رخصة صناعية
INDUSTRIAL LICENSE

| رقم الرخصة / License No | |
|-------------------------|--------------------|
| IN-2004426 | منشأة صناعية ناشئة |

| | | | |
|------------------|--|-------------------|----------------|
| License Status | Industrial Leader | حالة الرخصة | روداد الصناعة |
| Legal Form | Branch | الشكل القانوني | فرع |
| ADCCI No | | عضوية الفرقة | |
| First Issue Date | 24/03/2021 | تاريخ أول إصدار | Enviroment No. |
| Issue Date | 24/03/2021 | تاريخ الإصدار | FCR No. |
| Expiry Date | 23/03/2023 | تاريخ الانتهاء | Trade Name No. |
| Trade Name | Gridwalls Architectural Metal Industries - Branch Of Abu Dhabi 1 | رقم الاسم التجاري | TN-3954911 |
| Location | Not Required | موقع المنشأة | |

| Owner(s) Partner(s) | | | |
|---------------------|--|--------------------------|--------------|
| # | المساهلة / الشركاء | الجنسية / Nationality | الصفة / Role |
| 1 | Sultan Mohamed Sultan Bintiwhi Alsuwaidi | الإمارات العربية المتحدة | شريك |
| 2 | Hakemali Sadruddin Masani | الهند | شريك |
| 3 | Ali Nema Abbass Al Ani | العراق | شريك |

| الأنشطة / Activities | |
|---|--------------------------------|
| 1 Metal Prefabricated Buildings Manufacturing | صناعة المعادن المجهزة المعدنية |
| 2 House Furniture Manufacturing | صناعة الأثاث المنزلي |
| 3 Kitchen Furniture Manufacturing | صناعة أثاث المطابخ |

Note : This Document is Considered As Industrail Register

IN-2004426 - 01/04/2021

صرنا 12 لبطونى الإمارات العربية المتحدة P.O.Box 12, Abu Dhabi, United Arab Emirates T: +971 2 815 8888 F: +971 2 672 7749

مكتب تابع لدائرة التنمية الاقتصادية - أبو ظبي
 A Subsidiary of Abu Dhabi Department of Economic Development

للتأكد من صحة التفاصيل المذكورة في الرخصة يرجى زيارة موقع دائرة التنمية الاقتصادية - أبو ظبي <https://ded.abudhabi.ae/ar>

To verify the details mentioned in the license, please visit DED - Abu Dhabi website <https://ded.abudhabi.ae/en>

LICENSES

دائرة التنمية الاقتصادية
DEPARTMENT OF ECONOMIC DEVELOPMENT

رخصة صناعية
INDUSTRIAL LICENSE

| رقم الرخصة / License No | |
|-------------------------|--------------------|
| IN-2004426 | منشأة صناعية ناشئة |

| | | | |
|------------------|--|-------------------|----------------|
| License Status | Industrial Leader | حالة الرخصة | روداد الصناعة |
| Legal Form | Branch | الشكل القانوني | فرع |
| ADCCI No | | عضوية الفرقة | |
| First Issue Date | 24/03/2021 | تاريخ أول إصدار | Enviroment No. |
| Issue Date | 24/03/2021 | تاريخ الإصدار | FCR No. |
| Expiry Date | 23/03/2023 | تاريخ الانتهاء | Trade Name No. |
| Trade Name | Gridwalls Architectural Metal Industries - Branch Of Abu Dhabi 1 | رقم الاسم التجاري | TN-3954911 |
| Location | Not Required | موقع المنشأة | |

"Industrail Leader" Terms and conditions

- The location is not mandatory.
- The license is issued for a maximum duration of 2 years.
- The license does not entitle its owner for loans or banking facilities.
- The license does not entitle the owner for governmental incentives related to industrial inputs.
- The license allows 2 visas.
- Within the 2 years, the owner has to transform the license status from "Industrail Leader" to "Under Construction" license in compliance with all applicable rules otherwise it will be stalled out.
- Industrail Leader license does not permit to open a branch.
- The license does not permit the owner/ partners to practice the industrial activity.
- The Industrail Bureau has the right to amend these terms and conditions from time to time as per the requirements of the public interests.
- Owners / Partners should attest Memorandum Of Association (MOA) within one month of the issuance date, otherwise; the license will be considered cancelled if the MOA not attested from the notary public.

ملحوظات : تعتبر هذه الوثيقة بمثابة سجل صناعي

Note : This Document is Considered As Industrail Register

IN-2004426 - 01/04/2021

صرنا 12 لبطونى الإمارات العربية المتحدة P.O.Box 12, Abu Dhabi, United Arab Emirates T: +971 2 815 8888 F: +971 2 672 7749

مكتب تابع لدائرة التنمية الاقتصادية - أبو ظبي
 A Subsidiary of Abu Dhabi Department of Economic Development

للتأكد من صحة التفاصيل المذكورة في الرخصة يرجى زيارة موقع دائرة التنمية الاقتصادية - أبو ظبي <https://ded.abudhabi.ae/ar>

To verify the details mentioned in the license, please visit DED - Abu Dhabi website <https://ded.abudhabi.ae/en>

حكومة الشارقة
دائرة التنمية الاقتصادية

رخصة صناعية
Industrial License

| تفاصيل الرخصة / License Details | | | |
|---------------------------------|--|----------------|--|
| Issue Date | 2020/10/06 | تاريخ الإصدار | License No. 779180 |
| Expiry Date | 2021/10/06 | تاريخ الانتهاء | Registration No. 193433 |
| Trade Name | GRIDWALLS ARCHITECTURAL METAL INDUSTRIES L.L.C - SHJ. BR | الاسم التجاري | جردوئل للصناعات المعدنية المعمارية ش.ذ.م.م - فرع الشارقة |
| Legal status | Branch for Local Company | الشكل القانوني | فرع لشركة محلية |

| أطراف الرخصة / License Members | | | |
|--------------------------------|----------------------------------|-----------------------|---------------------------------------|
| رقم المستثمر / Investor No. | اسم المستثمر / Investor Name | الجنسية / Nationality | رقم الهوية / الجواز / ID/Passport No. |
| 4814997 | سلطان محمد سلطان بن توبه السويدي | الإمارات | 784196090216167 |
| 4814999 | حكم علي صدر الدين ماساني | الهند | 784194818083209 |
| 4826890 | علي نعمه عباس العائلي | العراق | 784197324761861 |

أنشطة الرخصة

صناعة الأثاث البلاستيكية للأبنية صناعة الأثاث المعدنية للمباني

العنوان

شارقة للصناعة رقم 11/11 شارع خلف الشيخ محمد بن زايد مشيرة رقم S08 ملك عرفان يسلم كرامه عوض الكلوي

تاريخ الصياغة: 2020/10/06

رقم المستند: 39795

- This document is official. It doesn't need to be stamped or signed.

- To view license details please visit SEDD web site: www.sedd.ae

- Distribution of there is strictly prohibited in public and residential areas.

- Distribution is allowed through.



Gridwalls AE

GRIDWALLS, Dubai Investment Park 1, Dubai,
PO Box 31771, UAE

Tel: +971 (04) 337 7618
Mail: info@gridwalls.ae
www.gridwalls.ae